

# HUSH MINI HOOD

Designed by David Trubridge

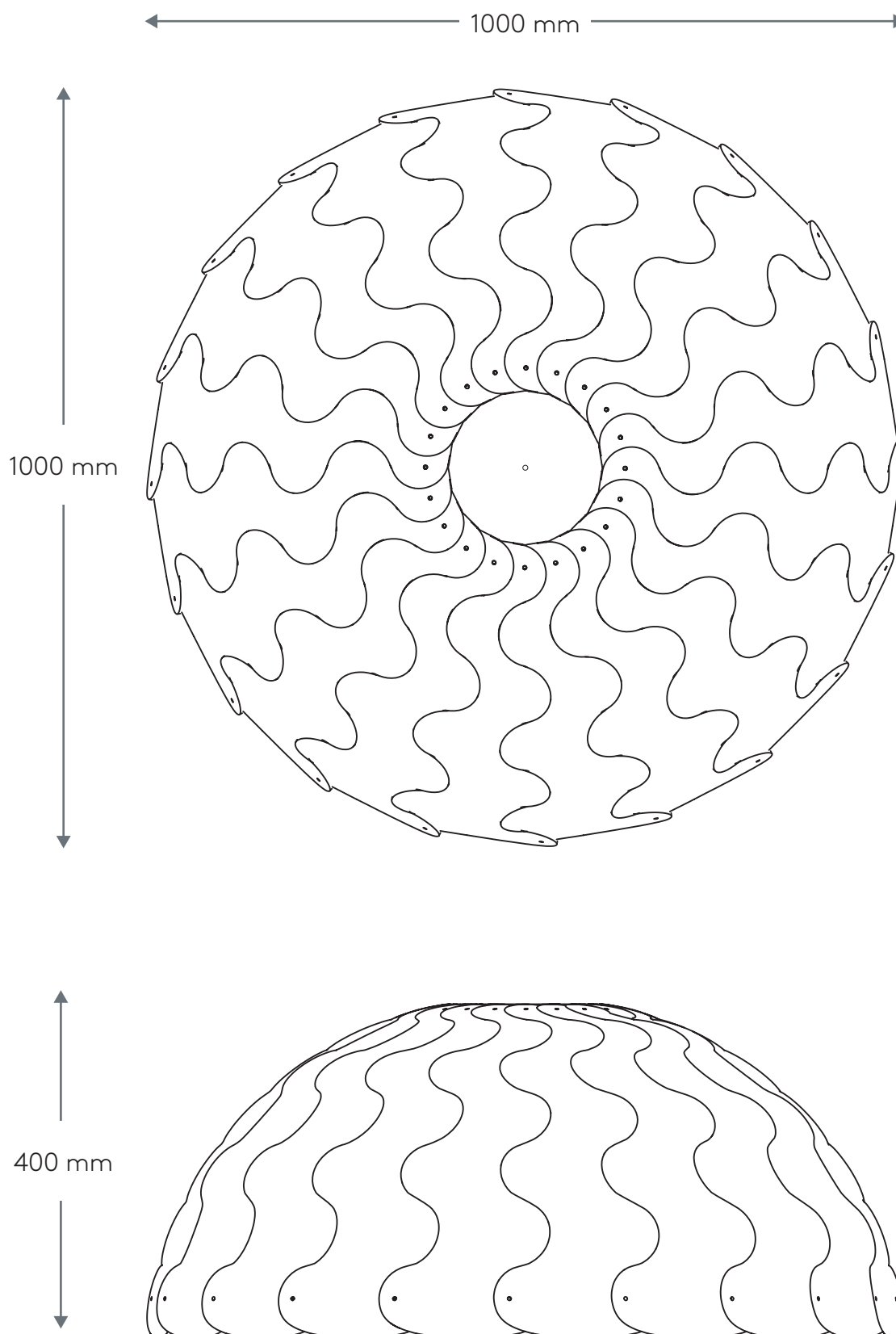
(1034-C)

pln.

---

## Overall Dimensions - Model: 1034C (Hood)

---



# HUSH MINI HOOD

Designed by David Trubridge

(1034-C)

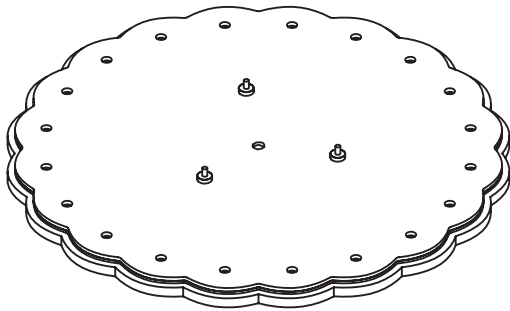
pln.

---

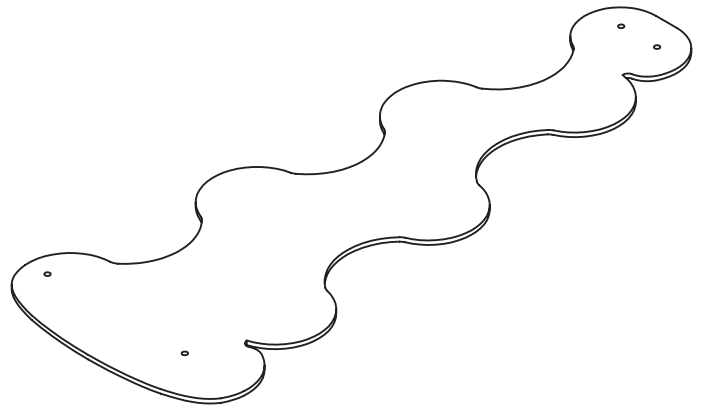
## Contents (not to scale)

---

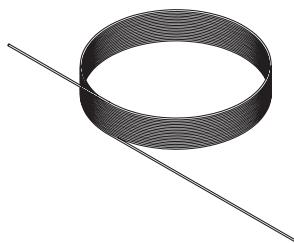
Please double check all components are present and quantities are correct before beginning assembly



x1  
Top Panel Assembly



x20  
Tapered  
Felt Panels



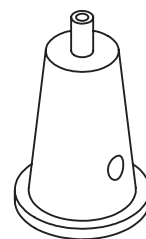
x1  
Triple Swage Cable



x40 (+5)  
Small Ratchet Rivets  
(13mm)



x40 (+5)  
Large Ratchet Rivets  
(9mm)



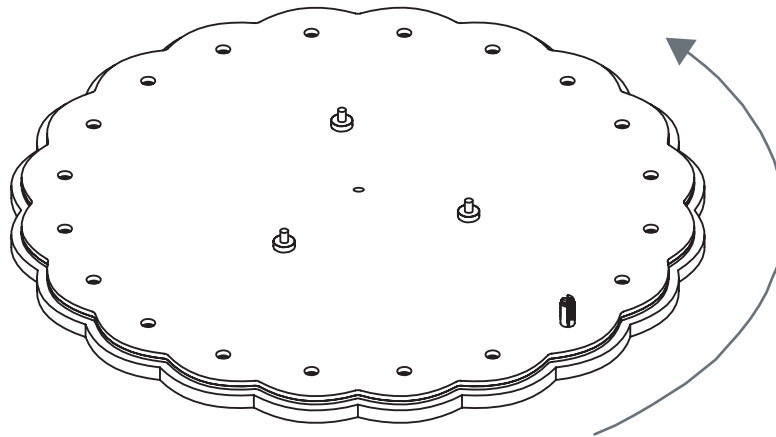
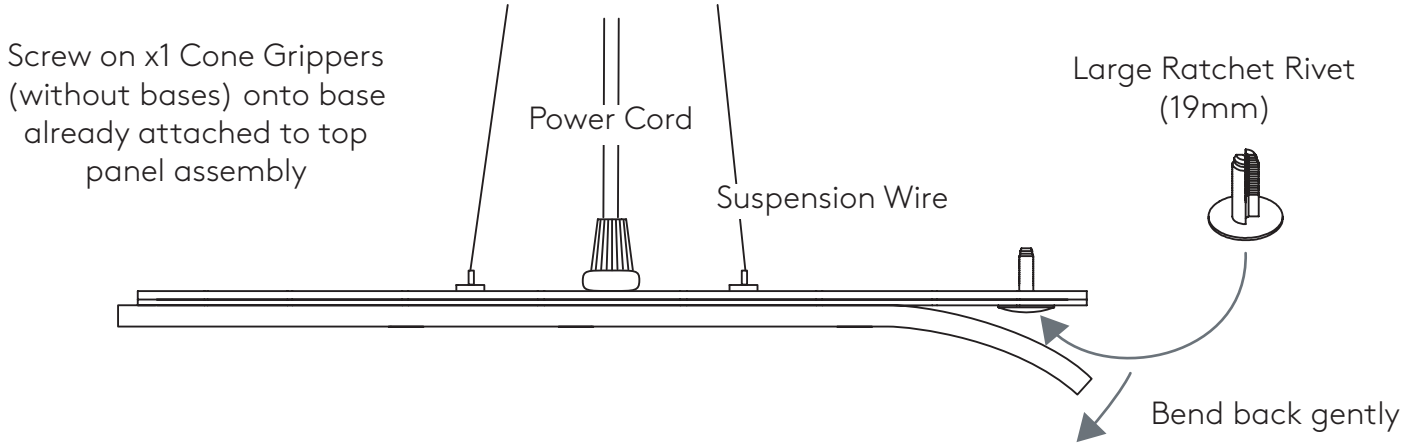
x1  
Cone Gripper  
with Base

# HUSH MINI HOOD

Designed by David Trubridge  
(1034-C)

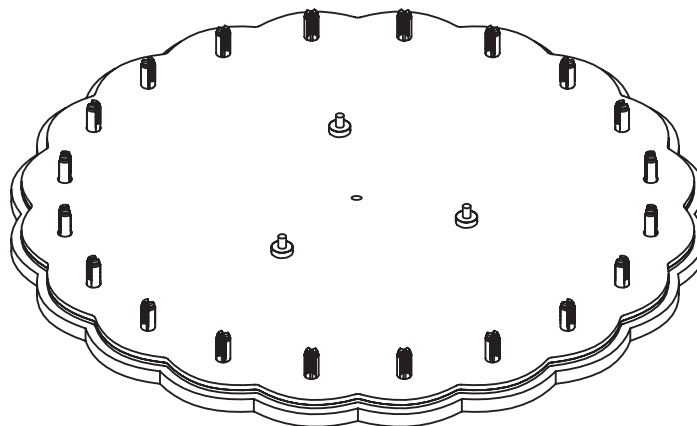


## Step 1 - Top Panel Ratchet Rivet Assembly



Insert Large Ratchet Rivets (19mm) in all holes around edge.

(suspension wires not shown)



# HUSH MINI HOOD

Designed by David Trubridge

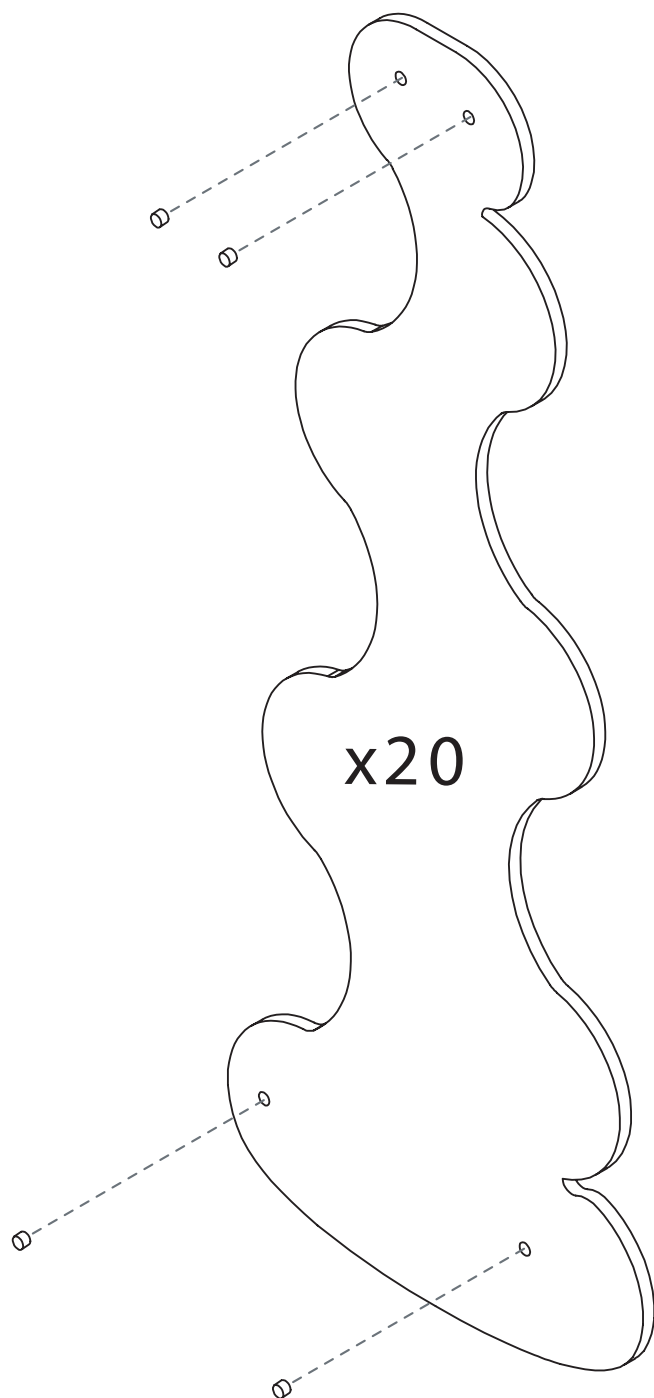
(1034-C)

pln.

---

## Step 2 - Pop out side panel plugs

---



Push out the 4 plugs per panel to make way for the plastic clips.

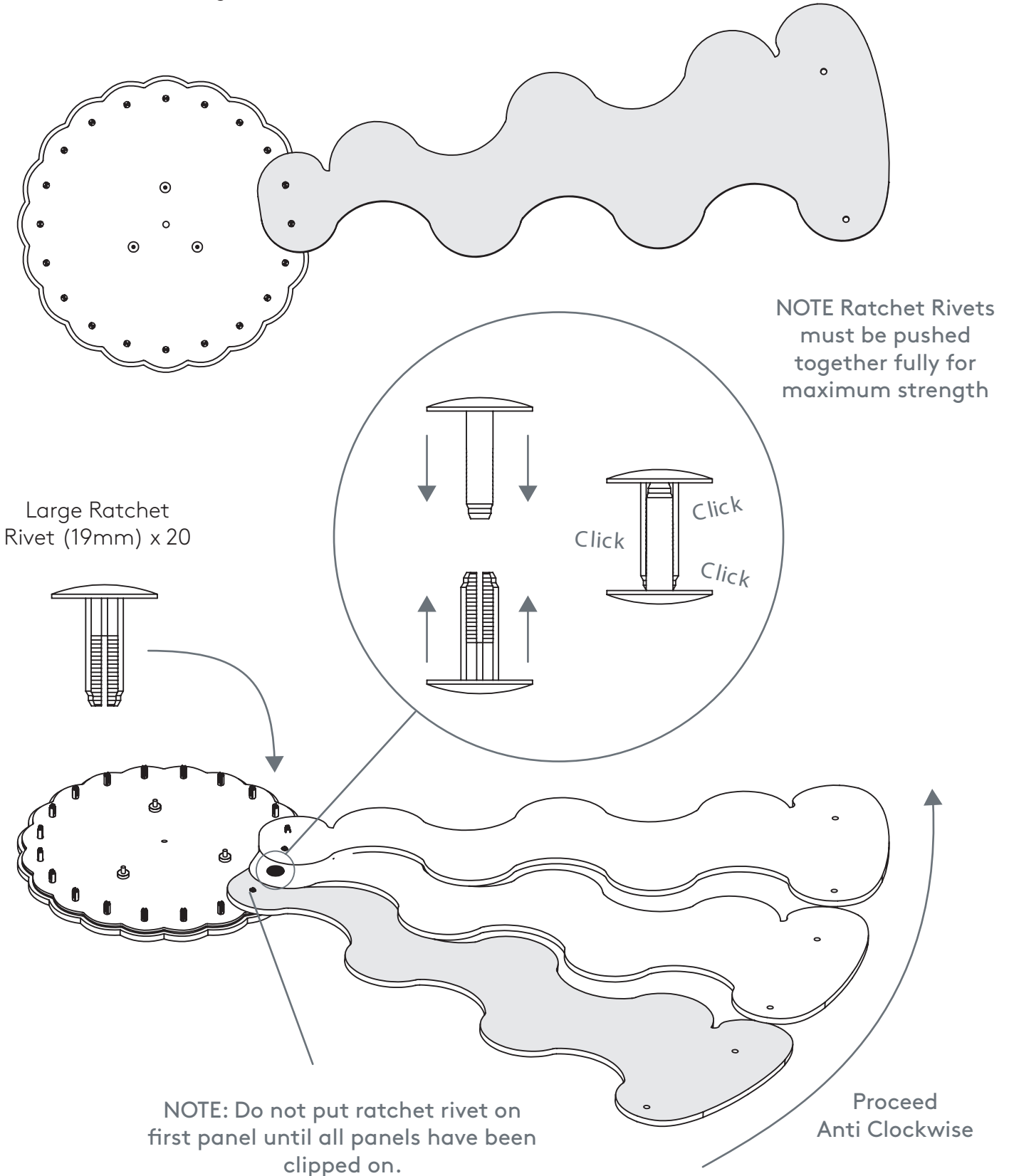
# HUSH MINI HOOD

Designed by David Trubridge  
(1034-C)

pln.

## Step 3 - Top Panel to Side Panel Assembly

Assemble on a large clean surface or on floor.



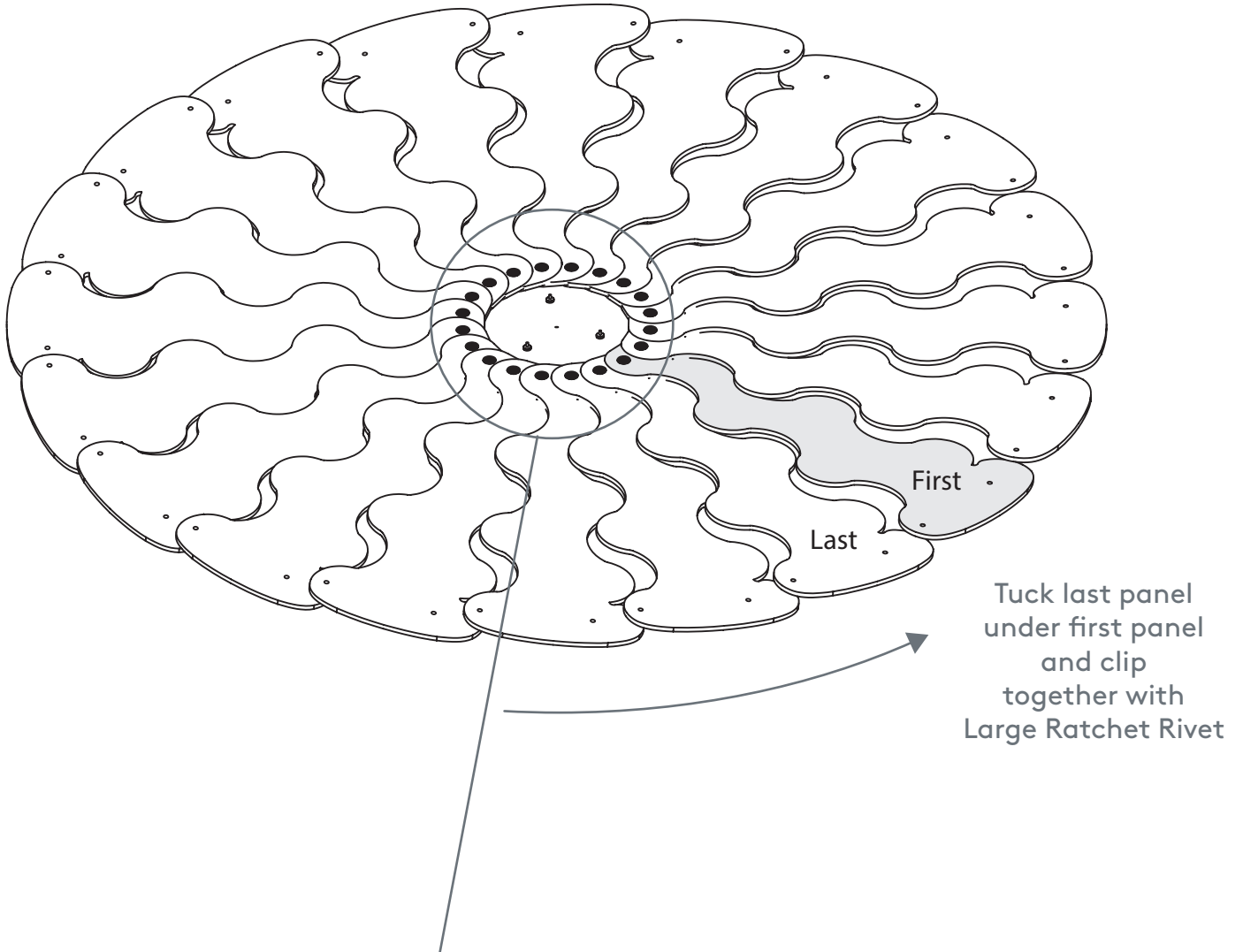
# HUSH MINI HOOD

Designed by David Trubridge

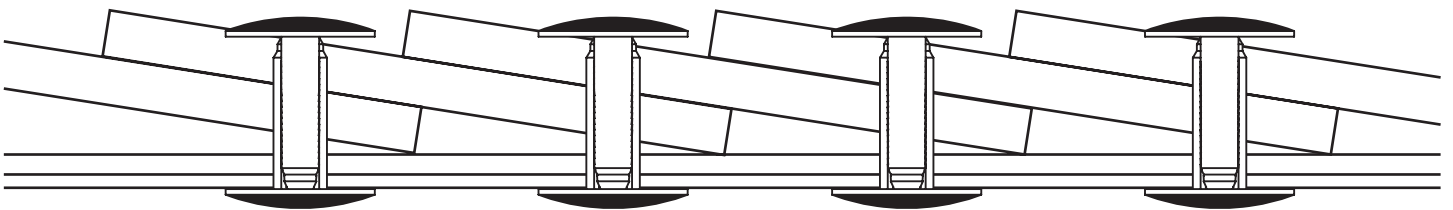
(1034-C)

pln.

## Step 4 - Top Panel to Side Panel Assembly Continued



Cross Section Detail View of Top Panels overlapping.



# HUSH MINI HOOD

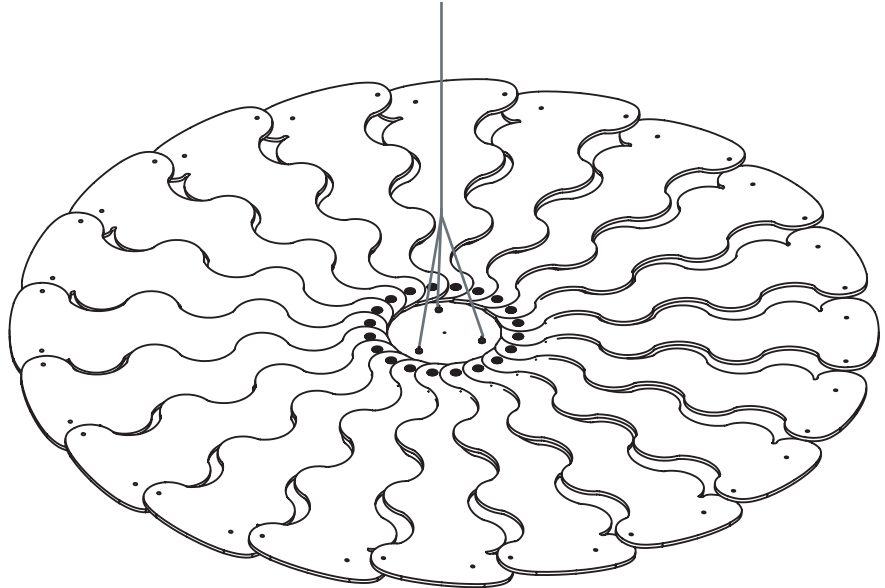
Designed by David Trubridge  
(1034-C)

pln.

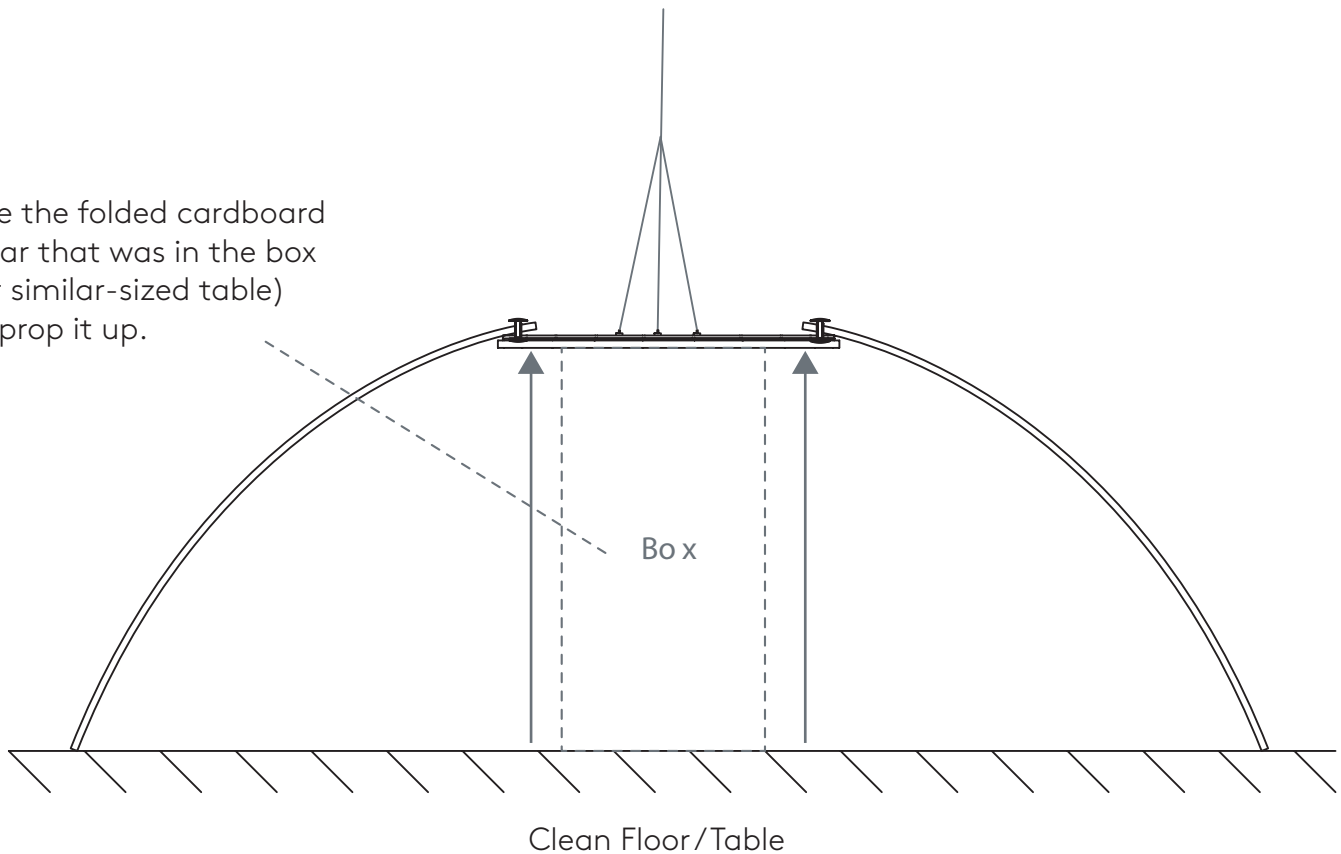
## Step 5 - Lifting into shape

Use suspension cable to lift the Hush Mini approximately 400mm from the floor/surface.

The panels will begin to fall into their natural shape.



Use the folded cardboard pillar that was in the box (or similar-sized table) to prop it up.



# HUSH MINI HOOD

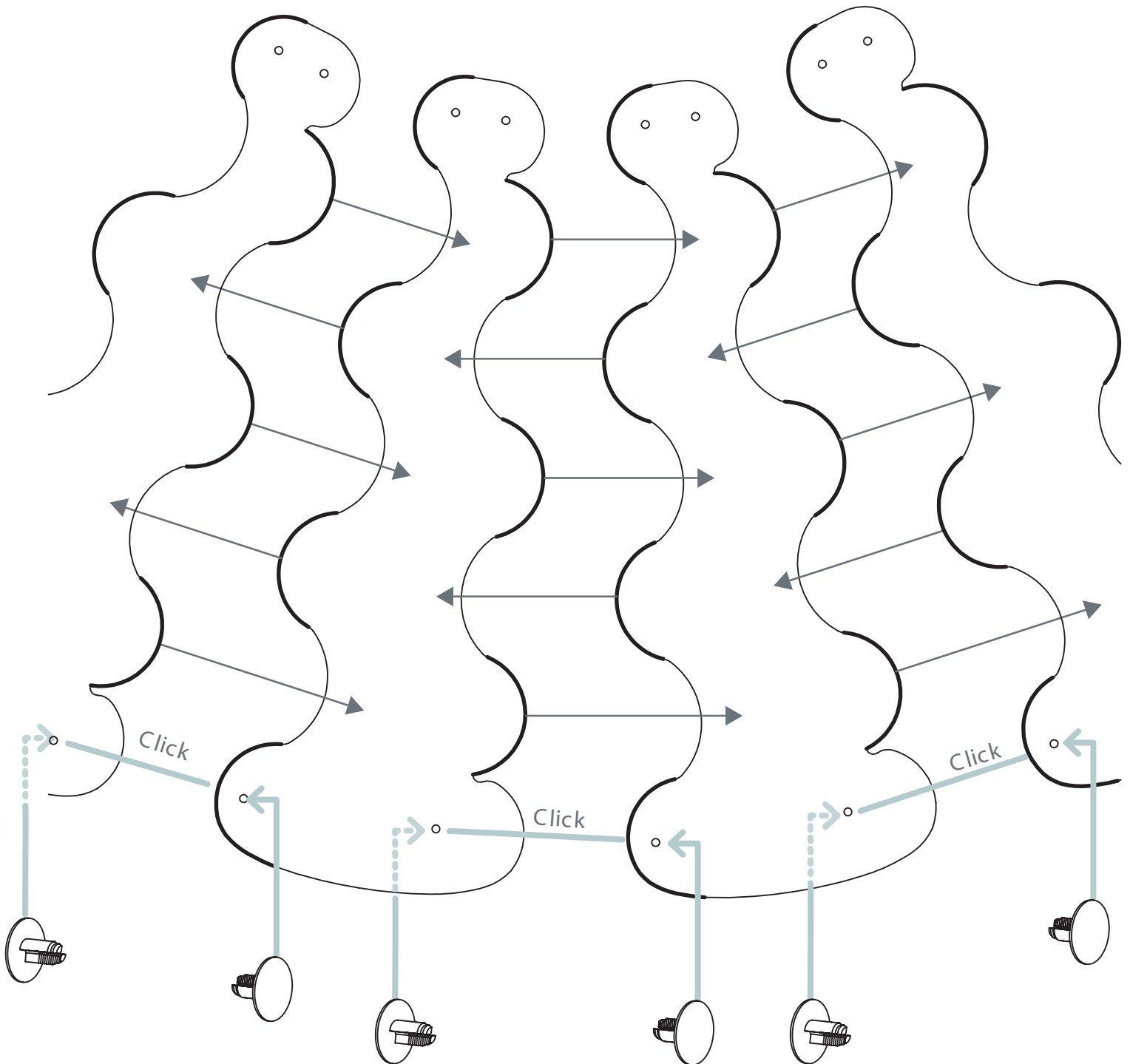
Designed by David Trubridge

(1034-C)

pln.

## Step 6A - Weaving of Panels - Exploded Detail

Bold Lines indicate the 'Ear' that sits on the outside of the Hush Mini.  
This weaving pattern is essential to lock the shape together



Once two panels are woven together, use two of the shorter Ratchet Rivets (13 mm) to lock them together.



# HUSH MINI HOOD

Designed by David Trubridge

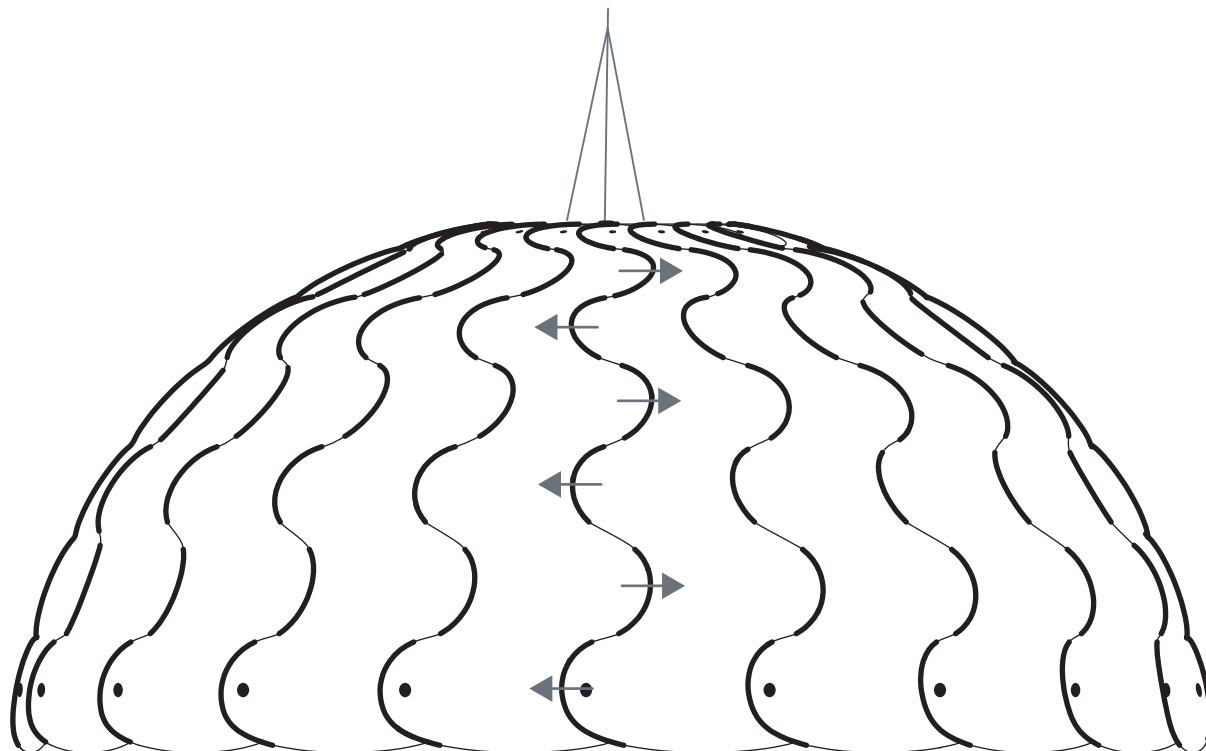
(1034-C)

pln.

---

## Step 6A - Weaving of Panels - Finished Detail

---



Bold Lines indicate the 'Ear' that sits on the outside of the Hush Mini.  
This weaving pattern is essential to lock the shape together

# HUSH MINI HOOD

Designed by David Trubridge  
(1034-C)

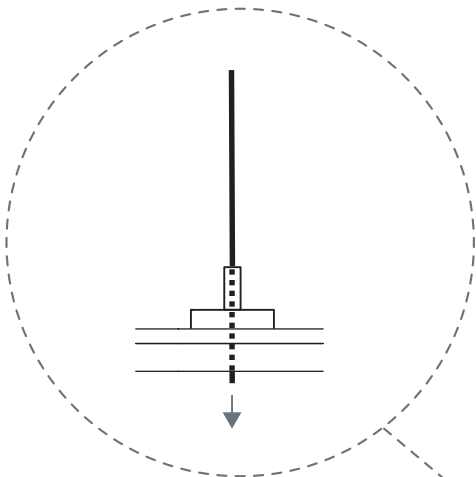
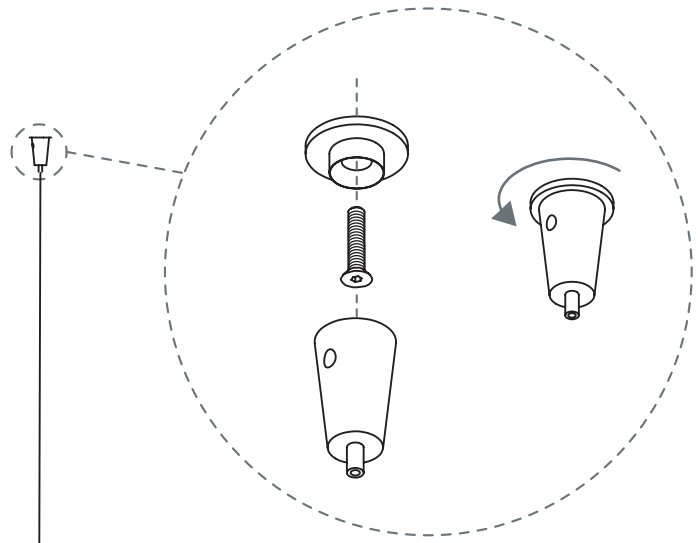
pln.

## Step 7 - Height Adjustment and Levelling

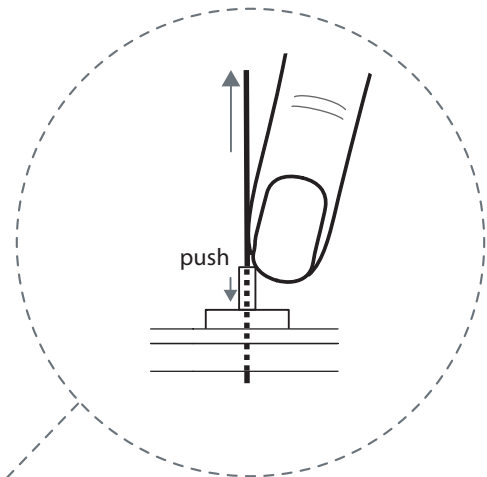
### Ceiling Mounting Point.

If installing into wood use a countersunk timber screw (not supplied) to affix cone grip to ceiling.

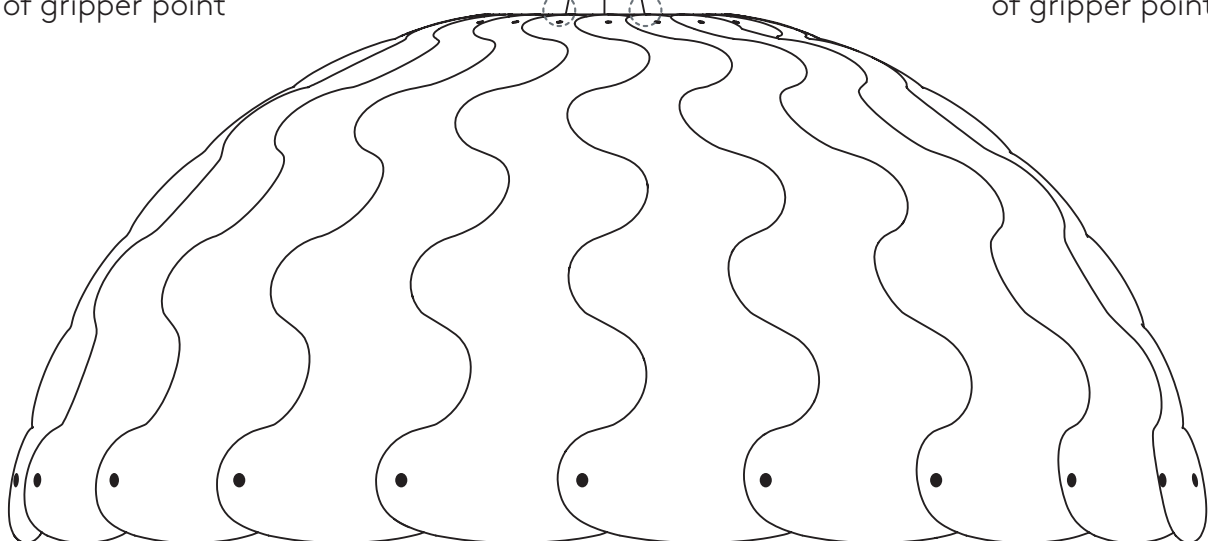
If installing into concrete use countersunk anchor bolt (not supplied) to affix cone grip to ceiling.



To shorten wire:  
Pull cable through hole  
in side of gripper point



To lengthen wire:  
Depress cylinder at top  
of gripper point and pull  
wire out



# HUSH MINI HOOD

Designed by David Trubridge

(1034-C)



## Appendix 1: Top Panel Sub Assembly

